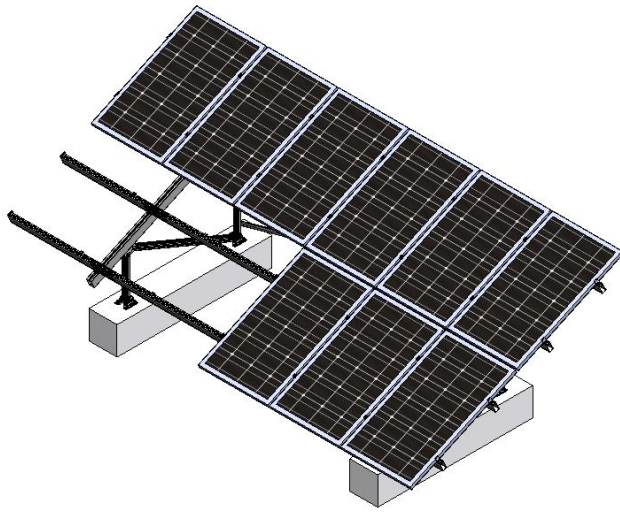


## CG1(Concrete Foundation Ground PV Mounting System1)



### Technical Data and Requirement

Technical Data	Requirement
<ol style="list-style-type: none"><li>1. Wind Load: 42m/s</li><li>2. Snow Load: 1.4KN/m<sup>2</sup></li><li>3. Span Range: 2.8m~4.0m</li><li>4. Concrete Base Position Error Range: ±10mm</li><li>5. Warranty: 10 years</li><li>6. Installation Angel Error Range: ±2°</li></ol>	<ol style="list-style-type: none"><li>1. Application: Open Ground</li><li>2. Rail Material: Aluminum</li><li>3. Hook、Screw Bolt、Screw Nut Material: SUS304</li><li>4. Solar Panel: Framed or Frameless</li><li>5. Installation Direction: vertical or horizontal</li></ol> <p>Design Standard: GB50009-2012, DIN1055, IBC2006, AS/NZS1170。</p>